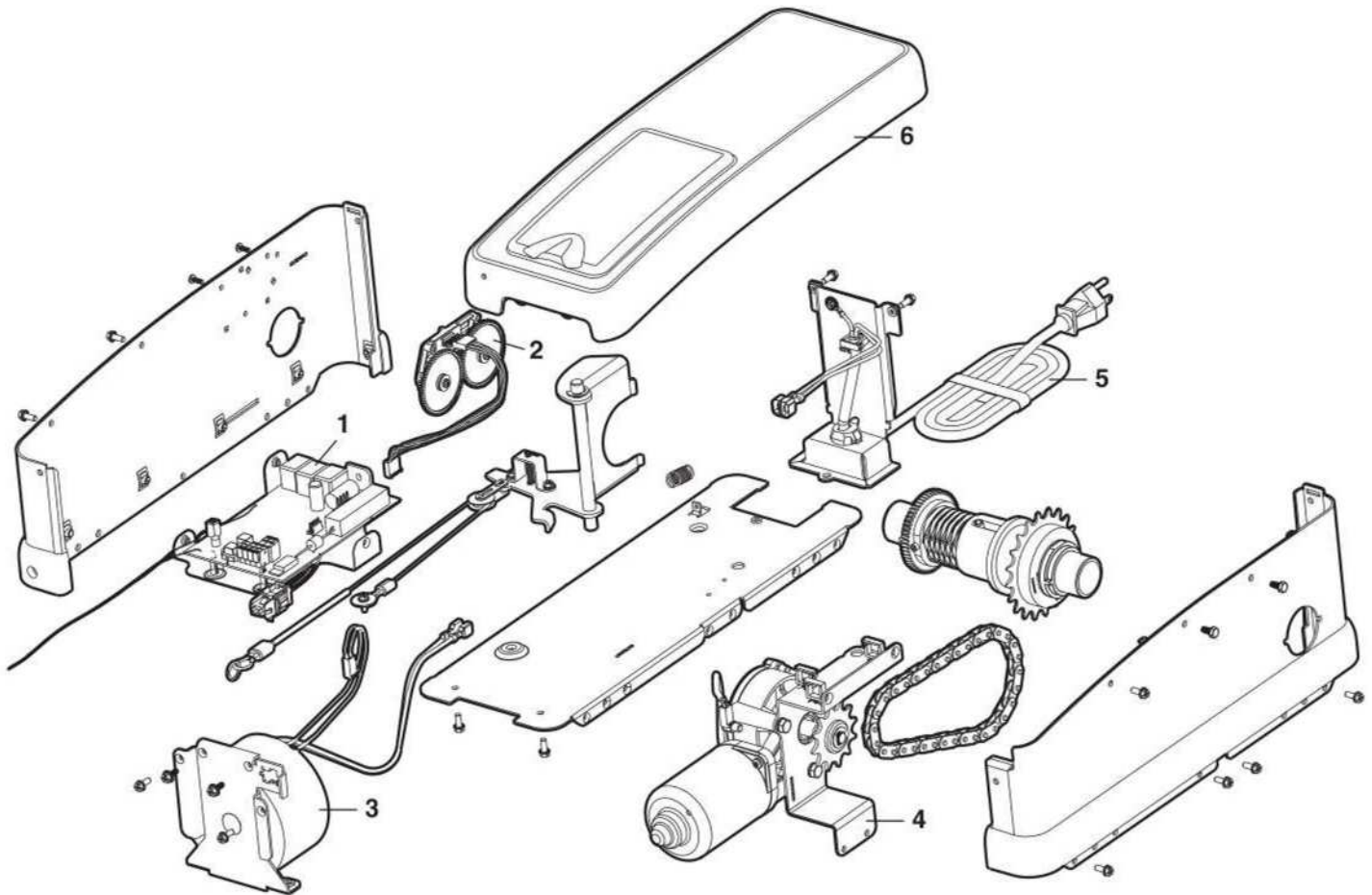


»DESPIECE OPERADOR RESIDENCIAL LIFTMASTER MOD. 3800

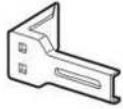


KEY NO.	PART NO.	DESCRIPTION	KEY NO.	PART NO.	DESCRIPTION
1	41DJ001	Logic board complete with plate	4	41A6095	Motor with bracket
2	41A6408	Absolute Encoder System	5	41B122	Power cord
3	41C168	Transformer	6	41A6348-3	Cover



»DESPIECE OPERADOR RESIDENCIAL LIFTMASTER MOD. 3800 ACCESSORIES

41A5281



Extension Brackets:

(Optional) For safety reversing sensor installation onto the wall or floor.

377LM



Keyless Entry with Security+®:

Enables homeowner to operate garage door opener from outside by entering a password on a specially designed keyboard. Also can add a temporary password for visitors or service persons. This temporary password can be limited to a programmable number of hours or entries.

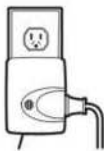
902LM/903LM



2 & 3 Door Multi-Function Wall Control:

Ideal for homes with up to three garage doors. Combine up to three controls into one wall control panel for a neat compact appearance. Enhanced functions include Lock Feature to lock out outside radio signals while you are away from home and turn opener lights on or off from the control panel.

395LM



Remote Light Control:

Enables homeowner to turn on a lamp, television or other appliance from their car with their garage door opener remote or from anywhere in their home with an additional LiftMaster Security+® remote.

380LM



Remote Light:

Enables homeowner to turn on a work light from their car with their garage door opener remote or from anywhere in their home with an additional LiftMaster Security+® remote.

975LM



Laser Park Assist:

Laser enables homeowners to precisely park vehicles in the garage.

373W



Designer Burled Walnut 3-Button Remote Control with Security+®:

Includes visor clip.

373LM



3-Button Security+® Remote Control:

Includes visor clip.

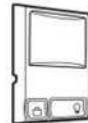
370LM



3-Button Mini-Remote Control with Security+®:

With key ring.

378LM



Wireless Door Control:

Push bar, light feature and auxiliary button. Includes battery.

915LM



Garage Door Monitor:

Security for the largest door of your home!

Tells you if your garage door is open or closed. Monitors up to 4 garage doors by adding additional sensor modules.

916LM



Garage Door Monitor Sensor:

Additional accessory sensor for homes with multiple garage doors.

475LM



EverCharge™ Battery Backup System:

Provides backup power to the model 3800 and 3500 garage door openers.

373P



3-Button Security+® Remote Control:

Includes visor clip.

480LM



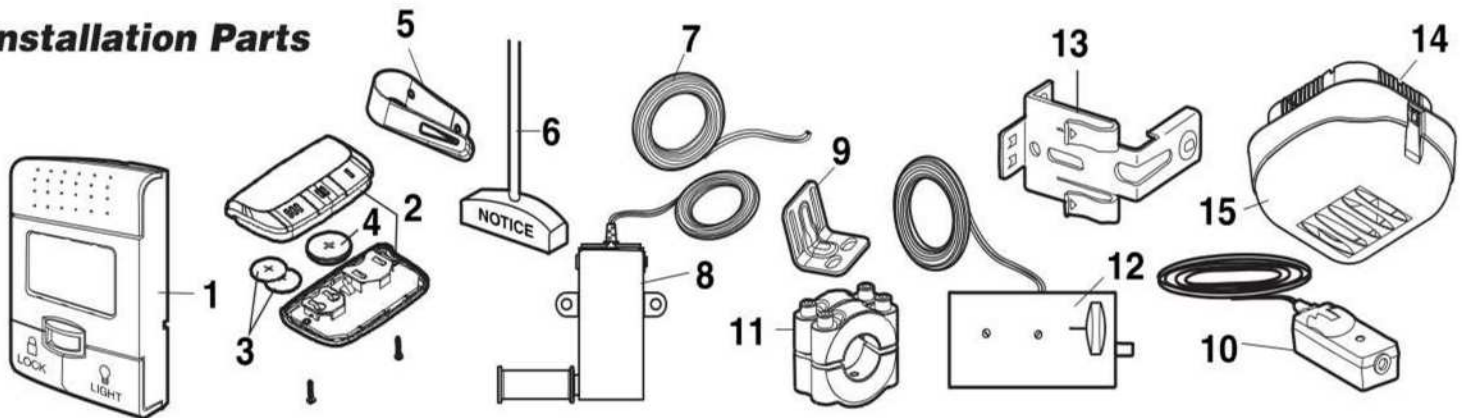
Alternate Mounting Kit:

This kit allows model 3800 to be mounted below the torsion bar in the case where the torsion bar is not round or the normal mounting area is obstructed.



»DESPIECE OPERADOR RESIDENCIAL LIFTMASTER MOD. 3800

Installation Parts



KEY NO.	PART NO.	DESCRIPTION	KEY NO.	PART NO.	DESCRIPTION
1	398LM	Smart Control Panel™	11	41A6388	Collar with set screws (2)
2	373P	3-Button remote control	12	41A6102	Power door lock
3	10A19	3V2016 lithium battery: led and opener	13	41A5266-1	Safety sensor brackets (2)
4	10A33	3V2450 lithium battery: proximity switch	14	380LM	Remote Light (Opener Light)
5	29C151	Remote control visor clip	15	41D96-1	Light lens for light
6	41A4582	Emergency release rope & handle assembly	NOT SHOWN		
7	41B4494-1	2-Conductor bell wire - white & white/red		101D173	Push bar for door control
8	41A6104	Cable tension monitor		41A6288	Hardware bag for light
9	41C0902	Mounting bracket		41A6298	Installation hardware bag (includes hardware listed on page 5)
10	41A5034	Safety sensor kit (receiving and sending eyes) with 3' (.9 m) 2-conductor bell wire attached		114A3399	Owner's manual
				114A3399SP	Owner's manual - Spanish

